

COOLGear DVI-PRO USB to DVI Adapter

Quick Installation Guide

Thank you for purchasing COOLGear DVI-PRO USB to DVI Adapter which will allow you to connect an additional display using only a USB 2.0 Port. We only manufacture high quality connectivity devices so we are sure you will be satisfied with your purchase.

Note: Your order has been carefully packaged and inspected, and we hope you are pleased with the product you purchased. Please inspect the contents of the package to ensure that you have received all items and that nothing has been damaged. If you discover a problem, please contact your dealer immediately for assistance.

Overview

The COOLGear DVI-PRO USB to DVI Adapter allows you to connect an extra display to your PC or Laptop's USB port.

The connected display can be configured to either mirror or primary screen, or extend the Windows desktop allowing visibility of more applications at the same time.

The COOLGear DVI-PRO USB to DVI Adapter driver used to control the extra screen uses very little computer resource and offers a vast array of screen resolutions and color depth. This ensures that there is little difference in performance between a directly connected screen and a screen connected through the COOLGear DVI-PRO USB to DVI Adapter.

The COOLGear DVI-PRO USB to DVI Adapter supports all analogue displays with a DVI connector. VGA displays can also be connected using a suitable DVI VGA converter.

You can connect up to 6 pieces COOLGear DVI-PRO USB to DVI Adapters to one PC as same time, and each one can works for different using.

System Requirements

PC with 1.2GHz or higher processor clock speed required. Intel Pentium/Celeron family, or AMD K6 / Athlon / Duron family, or compatible processor recommended.

256 megabytes(MB) of RAM or higher (512MB Recommended)

Windows 2000/XP/Vista

USB 2.0 port.

30MB of available disk space.

Super VGA(800*600) or higher-resolution video adapter and display.

CD-ROM or DVD drive

DVI Support

The DVI output on the COOLGear DVI-PRO USB to DVI Adapter is via a standard 29-pin DVI-I Dual Link connector. This should be connected directly to display. The DVI connector may be plugged and unplugged while the COOLGear DVI-PRO USB to

DVI Adapter is on. The COOLGear DVI-PRO USB to DVI Adapter should be connected to a USB 2.0 port.

Supported Modes

There are three components that make up the screen mode:

- 1, Resolution: In common usage, this refers to the number of pixels displayed on screen horizontally and vertically.
- 2, Color Depth: This defines the number of different colors that can be shown on the screen at the same time.
- 3, Refresh rate: Measures the speed that the entire screen is rescanned. Below is a list of refresh rates Supported at various resolutions and color depths for the COOLGear DVI-PRO USB to DVI Adapter.

Resolution	Name	Refresh rates available at 16bit color quality	Refresh rates available at 32bit color quality
640×480	VGA	60 72 75	60 72 75
800×600	SVGA	56 60 72 75 85	56 60 72 75 85
1024×768	XGA	60 70 75 85	60 70 75 85
1280×768	WXGA+	60 75 85	60 75 80
1280×1024	SXGA	60 75 85	60 75
1440×900	SXGA+	60 75 85	60 75 85
1600×1200	UXGA	60	60

Note :If the monitor does not advertise the supported modes, the COOLGear DVI-PRO USB to DVI Adapter will choose a set of common screen modes. If cloning the primary display, the COOLGear DVI-PRO USB to DVI Adapter will try to use the preferred monitor mode. In some cases, this may not be the most appropriate mode for the cloned desktop. It is recommended that the primary display resolution is changed to closer match the default resolution of the COOLGear DVI-PRO USB to DVI Adapter monitor.

Package Contents

- COOLGear DVI-PRO USB to DVI Adapter × 1
- USB 2.0 Cable × 1
- DVI to VGA Connector × 1
- Quick Installation Guide × 1
- Installation CD × 1

- If any items are damaged or missing, please contact your dealer.

COOLGear DVI-PRO USB to DVI Adapter Installation

The preferred method of installing the COOLGear DVI-PRO USB to DVI Adapter is to install the drivers before connecting it to the computer. This is done as follows:

Insert the supplied driver CD into the CD ROM drive. Navigate to the XP driver's area and double click "Setup.exe" to start installing the driver for the COOLGear DVI-PRO

USB to DVI Adapter. The following progress window will be seen:



Note: During the install the screen will blank a couple of times. This is normal behavior for windows when installing new graphics drivers. Once the drivers are installed, attach the COOLGear DVI-PRO USB to DVI Adapter to the computer. The computer will automatically detect the new USB device and install start the COOLGear DVI-PRO USB to DVI Adapter.

COOLGear DVI-PRO USB to DVI Adapter Operation

1, Initial Use

When the COOLGear DVI-PRO USB to DVI Adapter first starts, If no output is seen on the monitor connected to the COOLGear DVI-PRO USB to DVI Adapter, it may be in a mode which cannot be display by the monitor. This can happen if the monitor does not report its supported modes to the COOLGear DVI-PRO USB to DVI Adapter. Reduce the resolution of the primary display, and in turn the resolution of the COOLGear DVI-PRO USB to DVI Adapter until an image is shown. Note that placing the monitor into an unsupported mode for long periods can damage it. The two main modes of operation, Mirror and Extend are covered below.

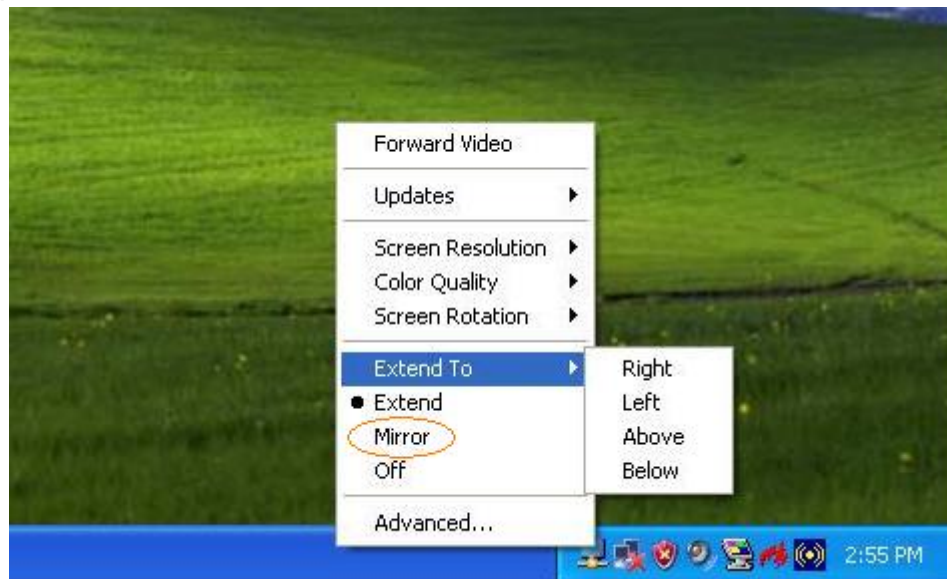
After the driver been installed, you will see a device "Forward Video USB to DVI Adapter" same as following picture:



Right click it, to set the mode you like:

2, Mirror Mode

Mirror mode copies the primary display to the monitor connected to the COOLGear DVI-PRO USB to DVI Adapter. For instance, this makes it easy to use a laptop with a desktop monitor. To set up it to copy the primary display, just set mode to “Mirror” as following picture



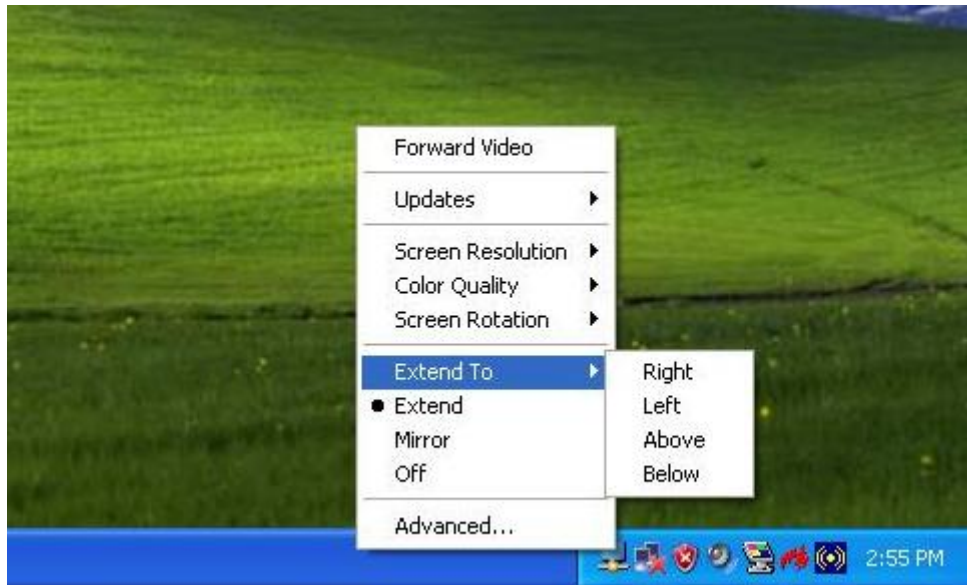
The resolution, color depth and refresh rate of the primary screen will be replicated to the monitor connected to the COOLGear DVI-PRO USB to DVI Adapter. If the monitor to the COOLGear DVI-PRO USB to DVI Adapter supports a lower resolution than the primary display, then a part of the screen is shown on the cloned display. As the mouse is moved around the screen, the COOLGear DVI-PRO USB to DVI Adapter will scroll to the current area.

3, Extended Mode

Extended mode extends the desktop across multiple monitors. This provides a number of advantages to increase productivity:

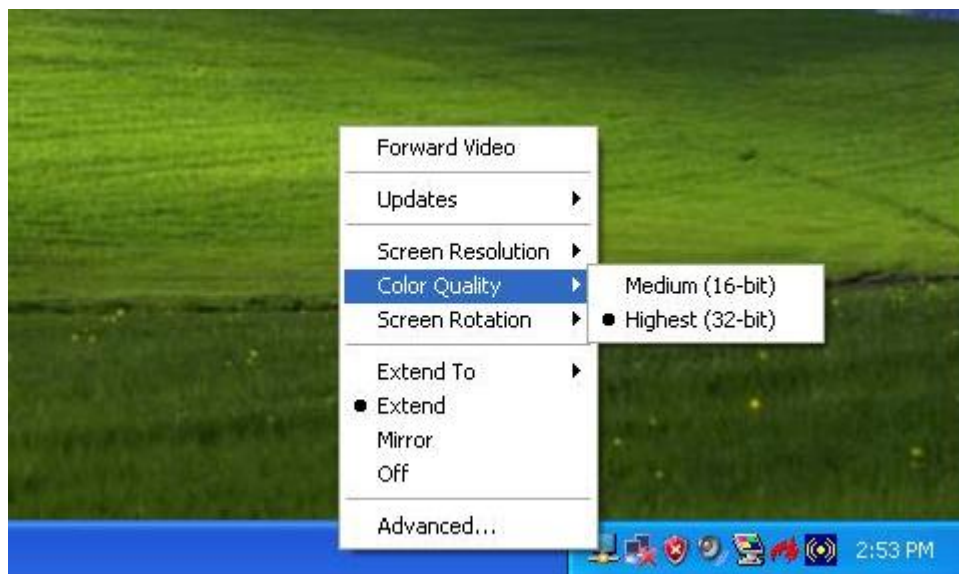
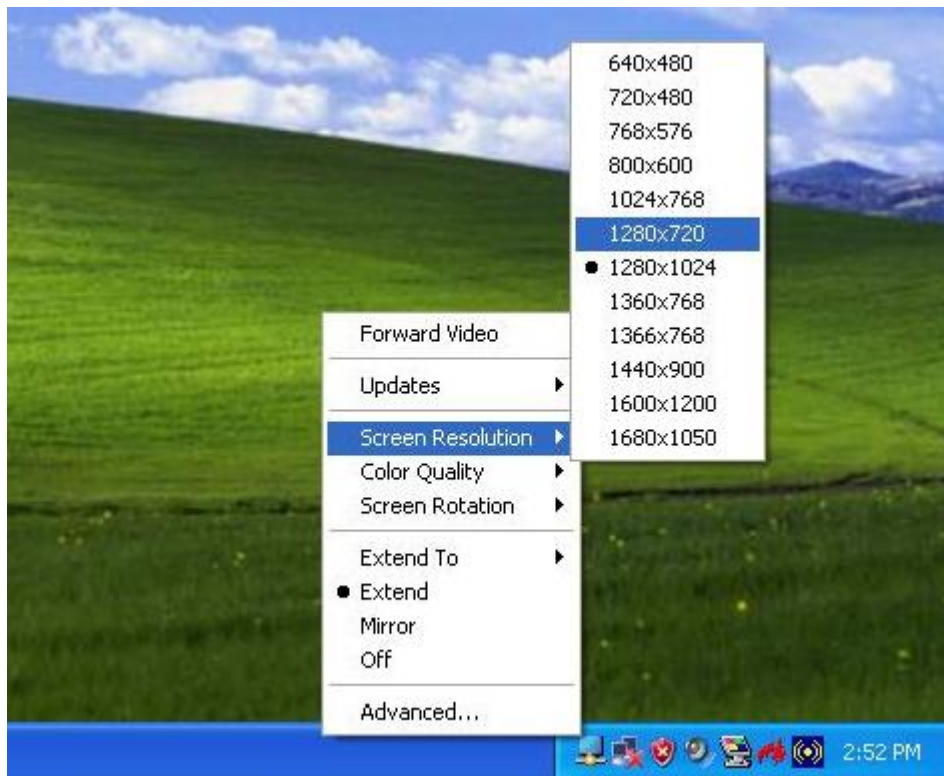
- Read email on one display, open attachments on the other. Expand s spreadsheet across both monitors.
- For graphics editing increase your working area by allowing all the pallets and toolbars to be placed on the second display.
- Keep your desktop on the COOLGear DVI-PRO USB to DVI Adapter display and watch a DVD on the primary display.

After set the mode to “Extend” as bellow:



You can set Extend to Right/Left/Above/Below, this means: for example, if you set Extend to “Left”, you can use your mouse drag the windows and move to Left, the windows will be show to the extended monitor by your drag.

The resolution and color depth of the extended monitor can also be set as below:



4, Off Mode

If the COOLGear DVI-PRO USB to DVI Adapter is connected to be set to “off” mode, the display will go blank. When the PC is again powered up, the connected display will return to the connected monitor in the same mode as it was before off mode

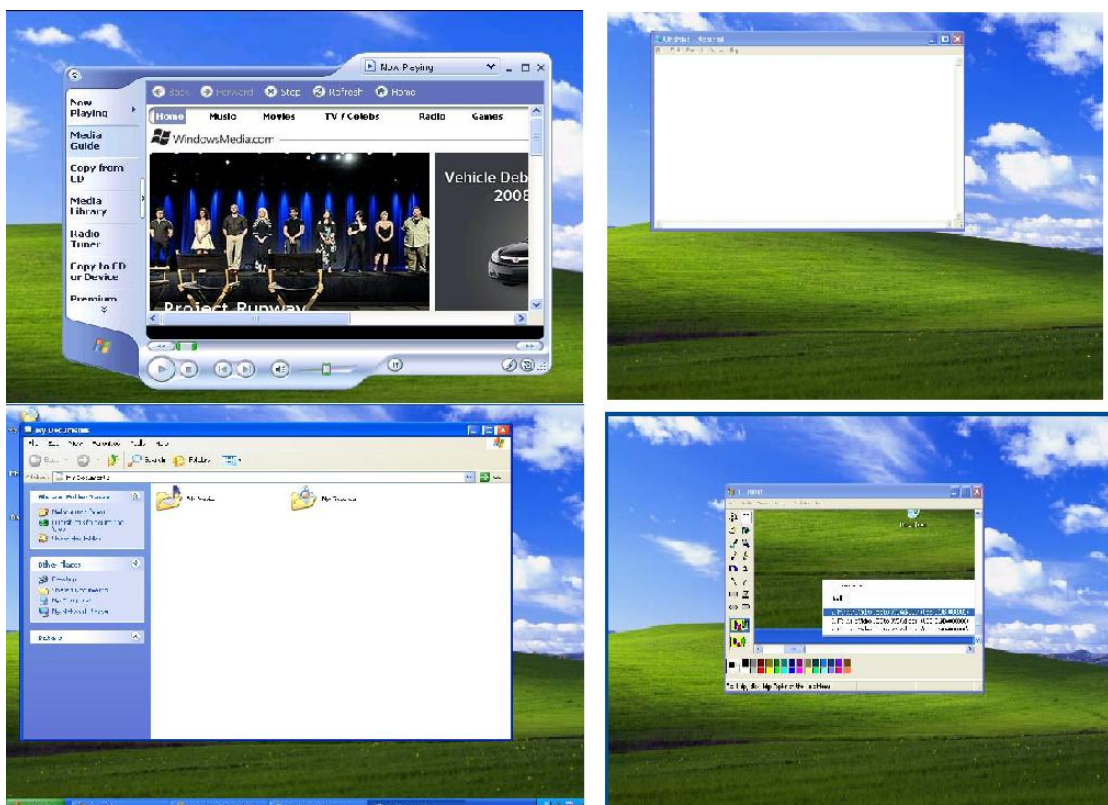
5, Using multiple COOLGear DVI-PRO USB to DVI Adapters

It's possible to connect up to 6 pieces COOLGear DVI-PRO as one computer at same time, and you can set your extended monitors shows different windows, For example,

following picture shows that we connect 3 pieces of COOLGear DVI-PRO, you can set the number 2/3/4 “forward video USB to DVI Adapter” for each monitor which you connect.



Following is the 4 monitors showing 4 different windows:



6, Unplugging the COOLGear DVI-PRO USB to DVI Adapter

If the COOLGear DVI-PRO USB to DVI Adapter is removed from the computer, the

display will blank. All windows and icons should move to the primary screen. On reconnection the COOLGear DVI-PRO USB to DVI Adapter, the display will return to the connected monitor in the same mode as it was before disconnection. However, windows and icons that were previously on the screen will not be moved back.

Uninstalling COOLGear DVI-PRO USB to DVI Adapter

The COOLGear DVI-PRO USB to DVI Adapter software can be removed from the “Add or Remove Programs” utility under the Windows control panel.

- 1, Open “Add or Remove Programs”
- 2, Find the “**Forward Video USB to DVI Adapter**” entry and click on “Remove”
- 3, Click Yes to confirm that you want to remove it
- 4, Uninstaller will then automatically remove all COOLGear DVI-PRO USB to DVI Adapter software.

